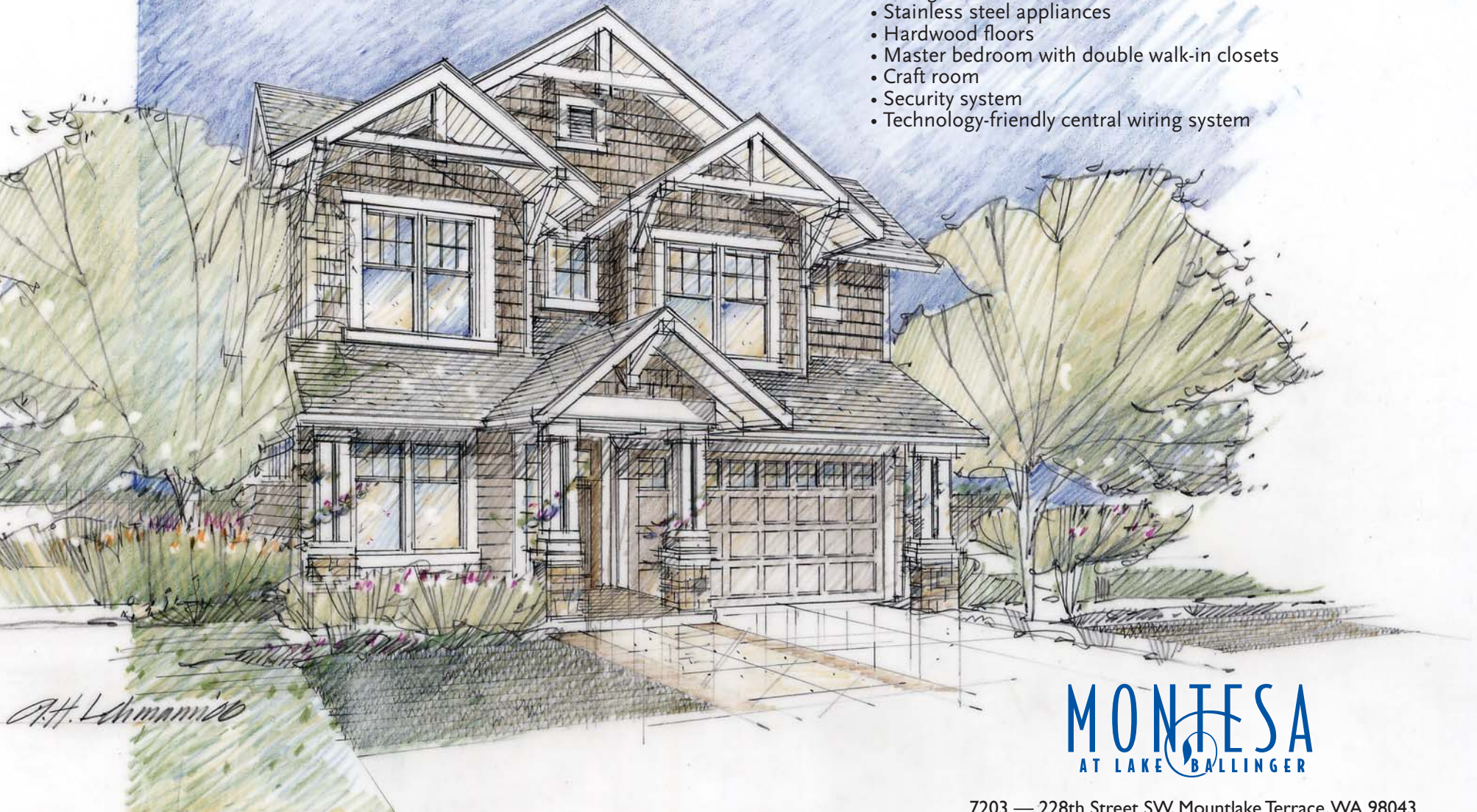


LIVE WHERE YOU PLAY.

Plan 2650
Home Sites: 4, 6, 8
2,650 Approximate Square Feet

- Exclusive neighborhood of twelve homes priced from the \$600,000s
- Across from 50-acre Ballinger Park, Lake Ballinger and golf course
- Direct access to Interurban trail for walking and biking
- Easy I-5 access and near Park n' Ride
- Just 5 miles to Seattle
- Luxurious chef's kitchen
- Slab granite counters
- Stainless steel appliances
- Hardwood floors
- Master bedroom with double walk-in closets
- Craft room
- Security system
- Technology-friendly central wiring system



MONTESA
AT LAKE BALLINGER

7203 — 228th Street SW, Mountlake Terrace, WA 98043

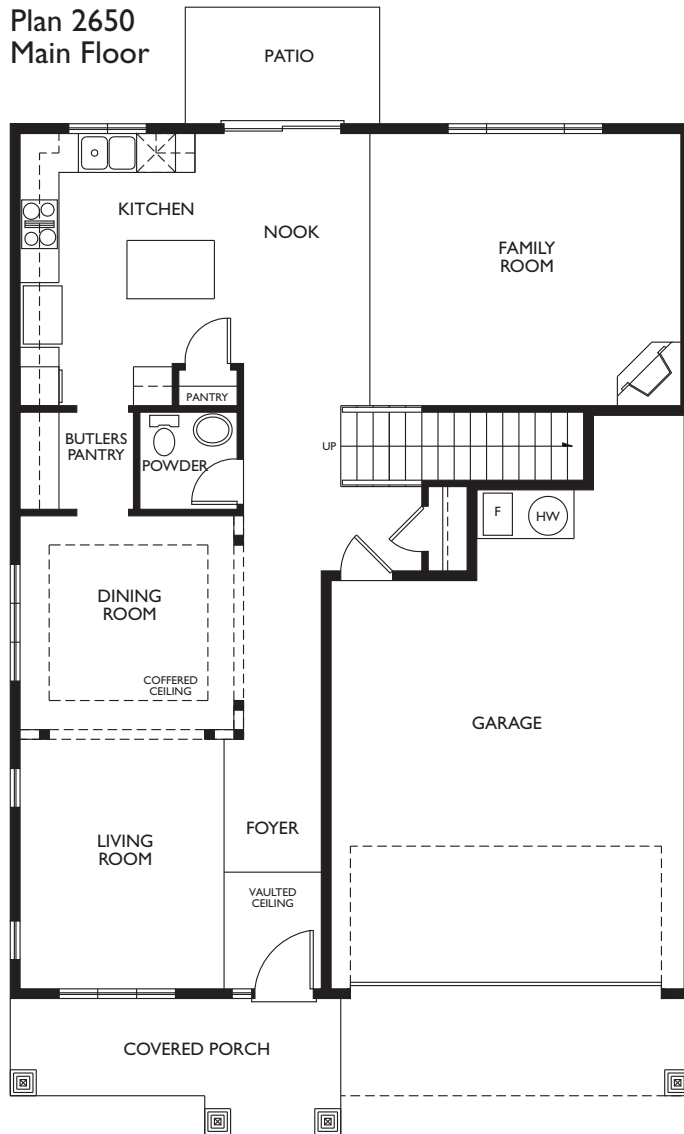
Mathew DeFreece 425-750-8244 Windermere Real Estate

www.murphybuilding.com

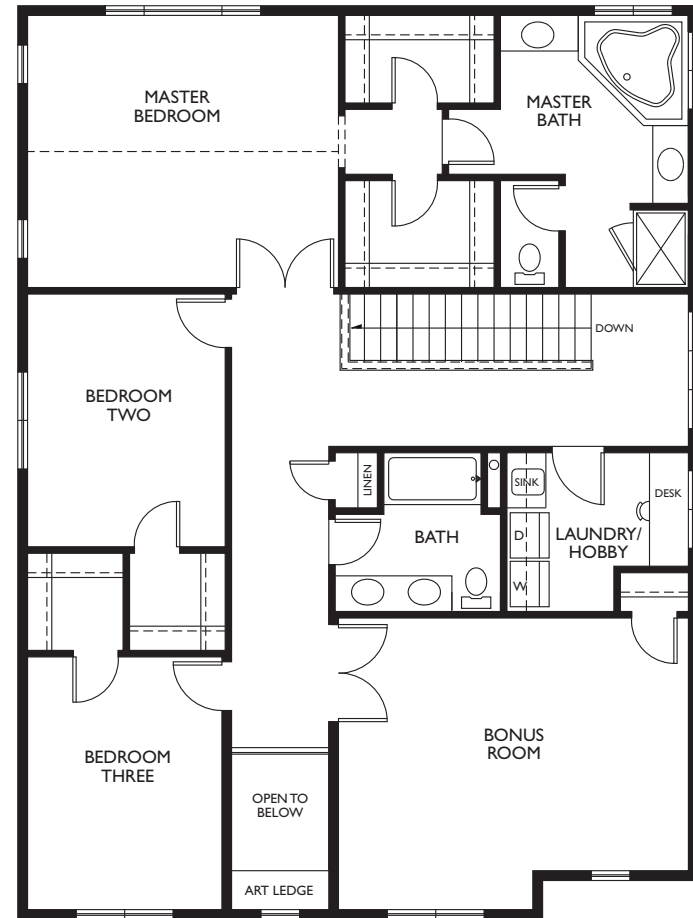
In our continuing effort to meet the challenge of product improvement, we reserve the right to modify or change plans, specifications, features and prices without notice. Renderings are an artist's conception only. All dimensions and sizes are approximate. Surveyed interior square footage will vary from exterior dimensions. Indicated square feet are per architect's plans. Patio areas, exterior parking and landscaping may change from the artist's conception and are intended as a general reference only.



Plan 2650
Main Floor



Plan 2650
Upper Floor



MONTESA
AT LAKE BALLINGER

7203 — 228th Street SW, Mountlake Terrace, WA 98043
Mathew DeFreece 425-750-8244 Windermere Real Estate
www.murphybuilding.com